

49/126

49/126

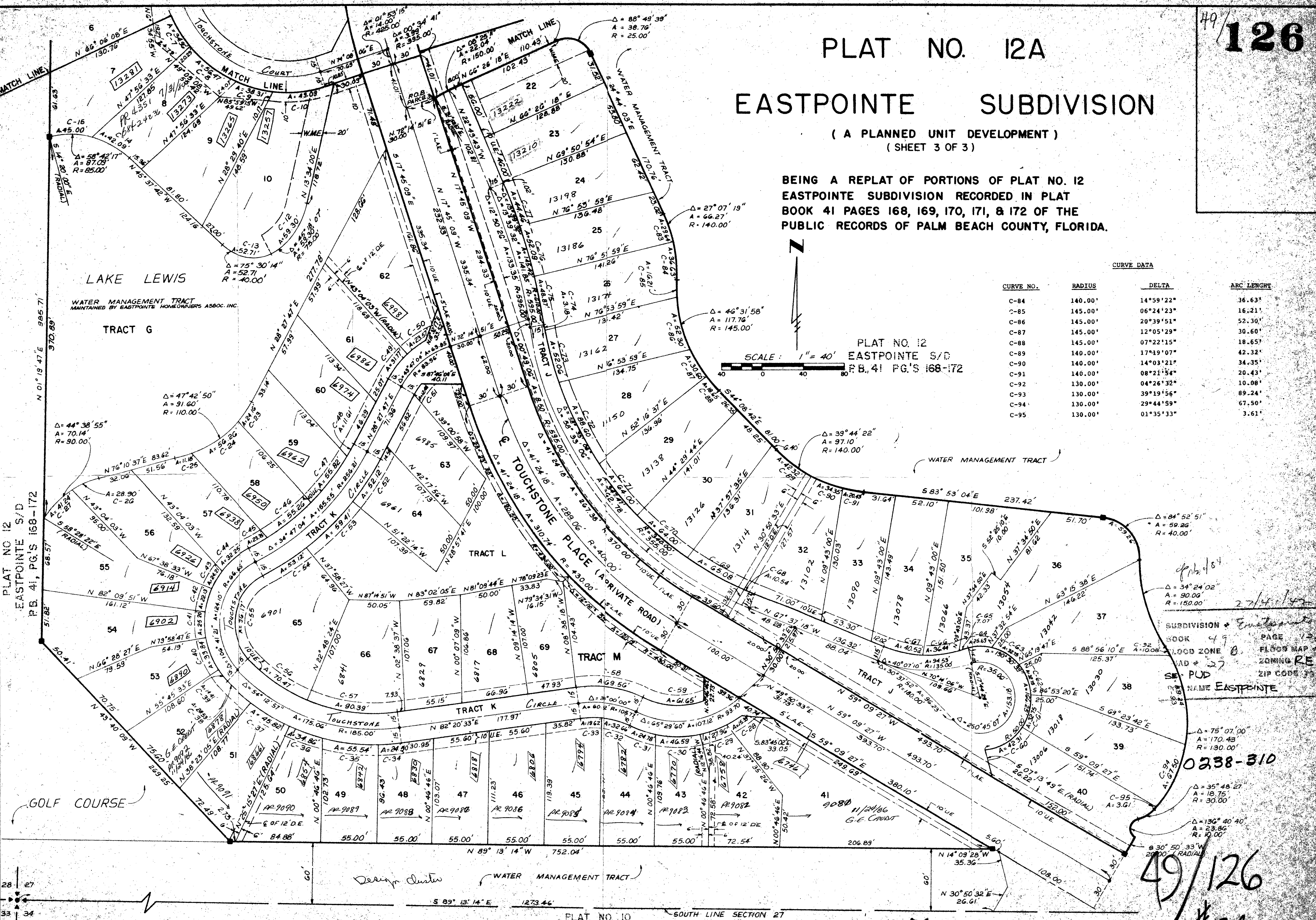
PLAT NO. 12A EASTPOINTE SUBDIVISION

(A PLANNED UNIT DEVELOPMENT)
(SHEET 3 OF 3)

BEING A REPLAT OF PORTIONS OF PLAT NO. 12
EASTPOINTE SUBDIVISION RECORDED IN PLAT
BOOK 41 PAGES 168, 169, 170, 171, & 172 OF THE
PUBLIC RECORDS OF PALM BEACH COUNTY, FLORIDA.

CURVE NO.	RADIUS	DELTA	ARC LENGTH
C-84	140.00'	14°59'22"	36.63'
C-85	145.00'	06°24'23"	16.21'
C-86	145.00'	20°39'51"	52.30'
C-87	145.00'	12°05'29"	30.60'
C-88	145.00'	07°22'15"	18.65'
C-89	140.00'	17°19'07"	42.32'
C-90	140.00'	14°03'21"	34.35'
C-91	140.00'	08°21'54"	20.43'
C-92	130.00'	04°26'32"	10.08'
C-93	130.00'	39°19'56"	89.24'
C-94	130.00'	29°44'59"	67.50'
C-95	130.00'	01°35'33"	3.61'

SCALE: 1" = 40'
PLAT NO. 12
EASTPOINTE S/D
P.B. 41 PG'S 168-172



SUBDIVISION * *Eastpointe*
 BOOK 49 PAGE 12
 FLOOD ZONE B FLOOD MAP
 ZONING RE
 ZIP CODE 33411
 SE PUD
 NAME EASTPOINTE
 0238-310
 49/126

PLAT NO. 10
EASTPOINTE S/D
P.B. 41 PG'S 65-68

EASTPOINTE SUBDIVISION #12A

DRAWING NUMBER

DRAWING NUMBER

DRAWING NUMBER

PLAN HOLD CORPORATION • IRVINE, CALIFORNIA
REORDER BY NUMBER 07548

PLAN HOLD CORPORATION • IRVINE, CALIFORNIA
REORDER BY NUMBER 07548

PLAN HOLD CORPORATION • IRVINE, CALIFORNIA
REORDER BY NUMBER 07548

PLAN HOLD CORPORATION • IRVINE, CALIFORNIA
REORDER BY NUMBER 07548